

IDENTIFICATION OF COMMON GROUND FISH SPECIES

(of Northern California)

Anglers are responsible for knowing current fishing regulations, which can change frequently.
Check the state website for up-to-date information.

Black Rockfish[†]



Large mouth. Body mottled with gray. White belly. Black spots on the dorsal membrane.

Blue Rockfish[†]



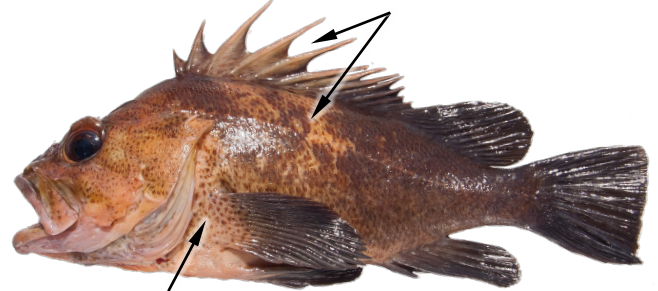
Small mouth. Vague stripes across forehead. Blue-tipped pelvic fins. Large angular blotches on sides of body.

Copper Rockfish[†]



Deep Bodied.
Light colored band along the last 2/3 of lateral line.

Quillback Rockfish[†]



Freckles on head and/or throat. Deep indentations in dorsal fin. Yellowish saddle markings do not extend to tail.

Brown Rockfish[‡]



Dark brown patch or spot on gill cover. Underside of throat and lower jaw pinkish. Fins may be pinkish.

China Rockfish[†]



Broad yellow stripe starting on dorsal fin, along lateral line. Yellowish white freckles.

Widow Rockfish[†]



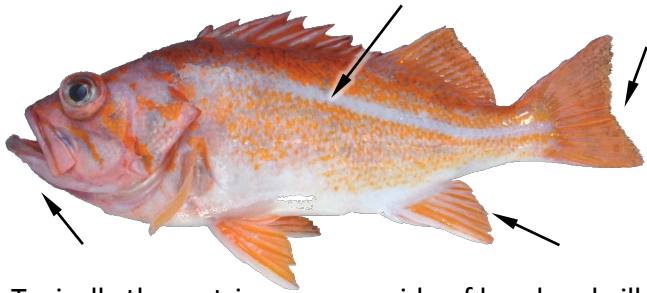
Small mouth. Black fin membranes.
Anal fin slanted posteriorly.

Yellowtail Rockfish[†]



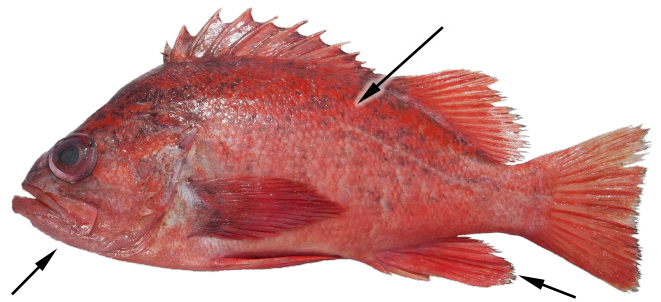
Fins yellowish, large mouth. May have pale patches or spots on back. May be confused with widow rockfish.

Canary Rockfish[†]



Typically three stripes across side of head and gill plate. Smooth jawline. Body orange mottled with gray. Gray lateral line. Anal fin slanted. Slightly indented tail.

Vermilion Rockfish[†]



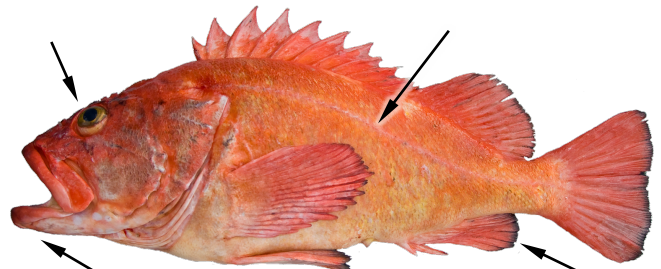
Lower jawline rough to touch. Body reddish and mottled with gray. Anal fin rounded.

Bocaccio[†]



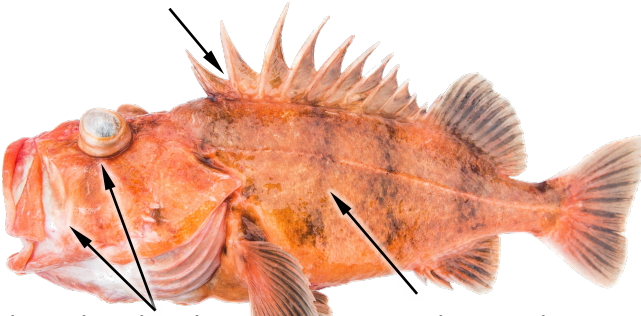
Large mouth extending upwards. Slightly concave between mouth and dorsal fin. Upper jaw extends to the back of the eye. Body orange, olive or brown.

Yelloweye Rockfish[†]



Bright yellow eye and raspy ridges above eye. Smooth jawline. Fins usually have black edges. Juveniles have 1 or 2 white stripes along side of body.

Cowcod^{††}



Very large head with and upper jaw. Deeply pale pink to orange in color. very wide space between eye and notched dorsal fins. Body is with dusky vertical bars on sides.

Cabezon[†]



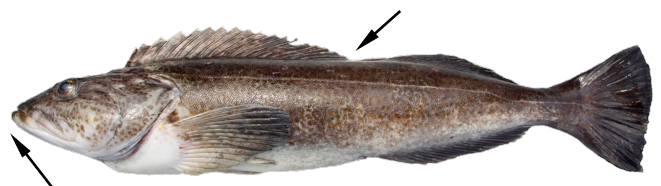
Flap of skin above eye and on snout. Huge mouth, small teeth. Body marbled. Smooth skin lacking scales.

Kelp Greenling[†]



Small mouth, small teeth. Blue spots may be faint except when breeding, when they become almost neon. Reddish spots on female. Smooth skin.

Lingcod[†]



Large mouth and large teeth. Deep notch in long dorsal fin. Elongated body. Smooth skin.

